

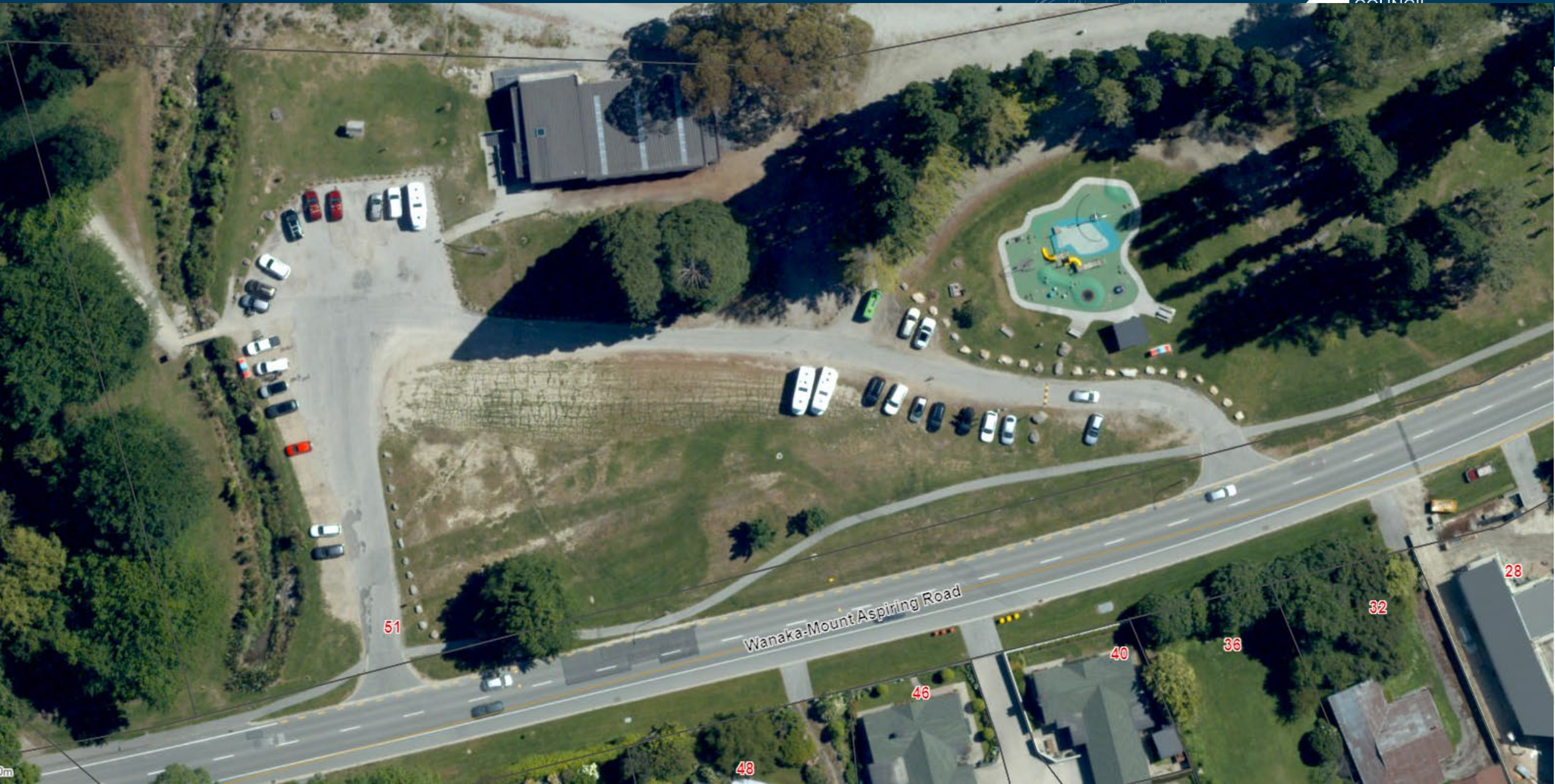
# **Wānaka Upper Clutha Community Board**

**PROJECT: Water Sports Car Park, Wānaka**

**DATE: Thursday 21 November 2024**

**PRESENTED BY: Maddy Dowman**





# OBJECTIVE

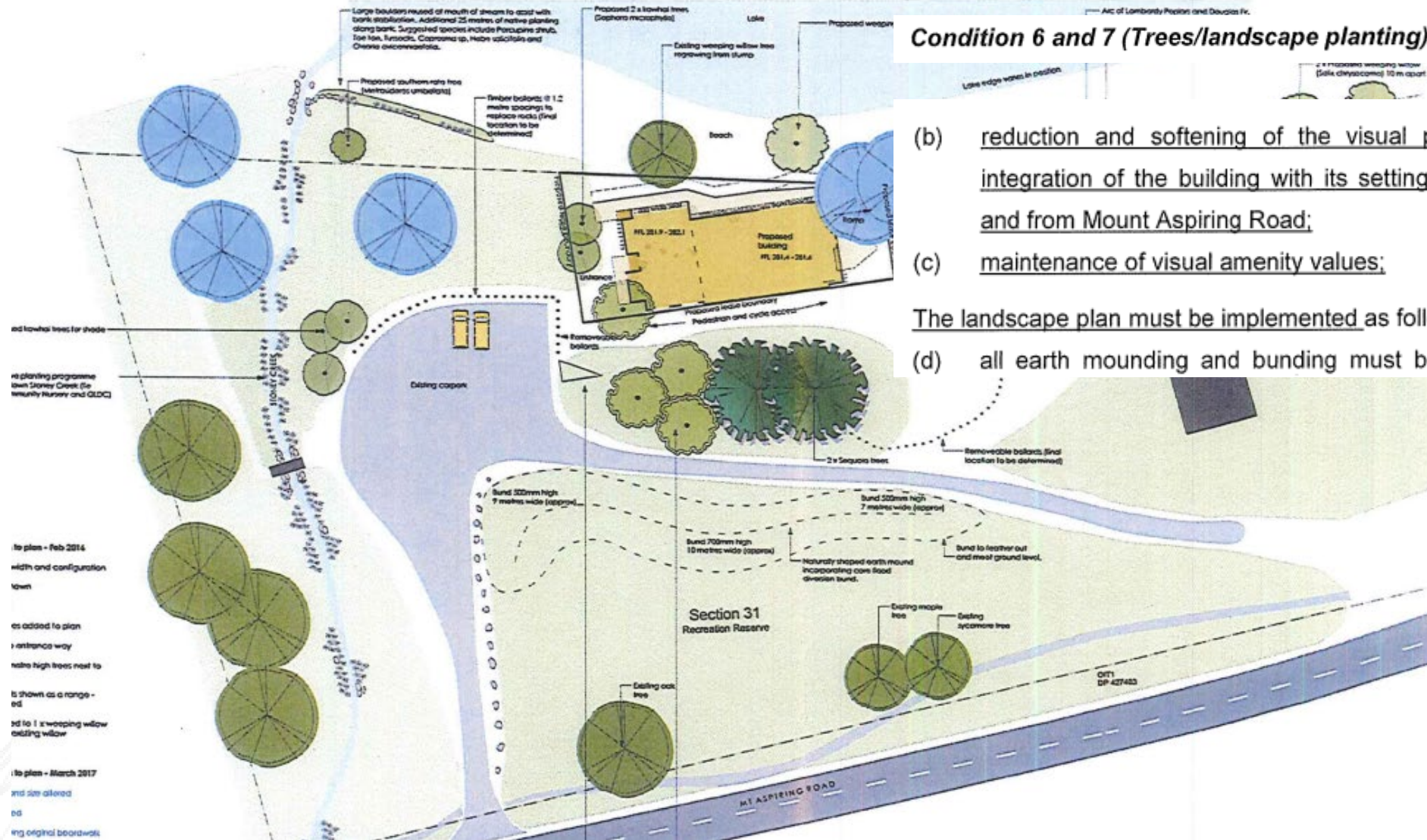
**Objective:** Manage congestion and improve functionality within available budget (\$10-15K)

- Direction on preferred options to limit/reduce parking through small improvements to the car park

# BACKGROUND/CONSIDERATIONS

- 'Active travel' through the site has been the priority for recent capital spend
- Bridge & track construction and initial small car park works (directional arrows & give-way sign) complete
- Quarterly Parks update Sept 2024, further direction from WUCCB to carry out additional small improvements to manage congestion & improve functionality
- Small surplus available from project budget (\$10-15K)
- Explored possibility to shift earth mound..

# CONSTRAINT: ENVIRONMENT COURT DECISION 2017 (RM150679)



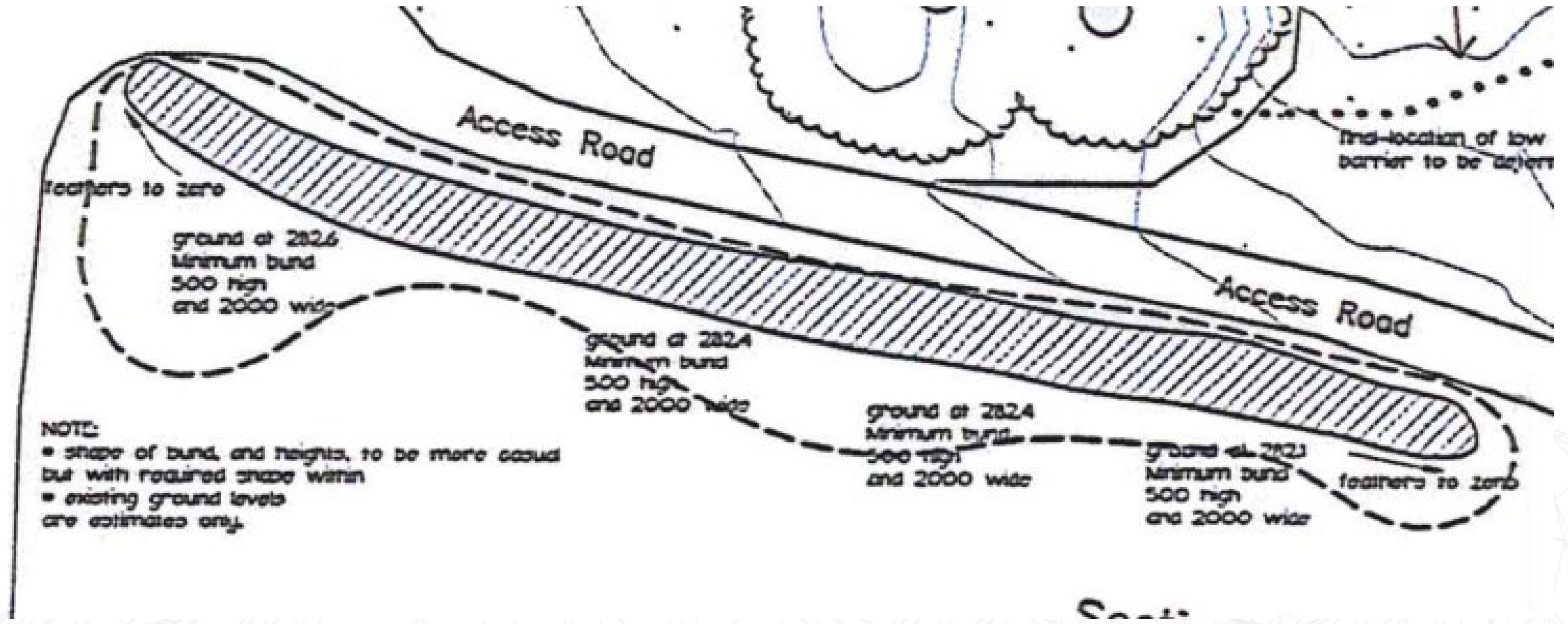
## Condition 6 and 7 (Trees/landscape planting)

- (b) reduction and softening of the visual prominence of the building and integration of the building with its setting when viewed in close proximity and from Mount Aspiring Road;
- (c) maintenance of visual amenity values;

The landscape plan must be implemented as follows:

- (d) all earth mounding and bunding must be completed, all proposed trees

# ENVIRONMENT COURT DECISION 2017



# ROCK PLACEMENT

- Define car parking area by placing large rocks alongside ‘through-road’/green space boundary to prevent vehicles parking on reserve and earth mound
- Other options considered: bollards & fencing
  - Potential for re-occurring damage to posts
  - Costs for tree protection management (2x protected sequoia trees)
  - Consistency for current management

# ROCK PLACEMENT





# ROCK PLACEMENT : CONSIDERATIONS

- There is no available budget to restore the currently compacted dirt mound to grass or planting
- Vehicles likely to access reserve from Mt Aspiring Rd during peak periods (A&P Show)

Direction:

1. **Allow** informal parking on earth mound/green space?
2. **Do no allow** informal parking on earth mound/green space through the placement of large rocks?

# OPTIONS: Line Painting

- 1.** Line paint without provision for a bus park  
*(approx. 25 spaces, incl 1x accessible and 3x campervan parks)*
- 2.** Line paint with provision for bus park  
*(reduces available space for car parking – number of parks TBC)*
- 3.** Do no line paint, maintain informal use

# LINE PAINTING



# LINE PAINTING CONSIDERATIONS

- Signage + Enforcement required for line painting
- Parking restrictions likely to be required (e.g. bus park)
- The above requires internal process for approval at a later date (2025)
- Bus park limited to 1 safe location only – parallel to Stoney Creek
- Line painting unable take place until early 2025
- Possibility to paint road boundary lines, budget dependant
- With the absence of design, there is value in informality – trade problems for problems

# RECOMMENDATION

- Recommend placement of rocks to limit parking capacity
- Recommend no line painting as likely to create subsequent challenges

# DISCUSSION/QUESTIONS/DECISION

