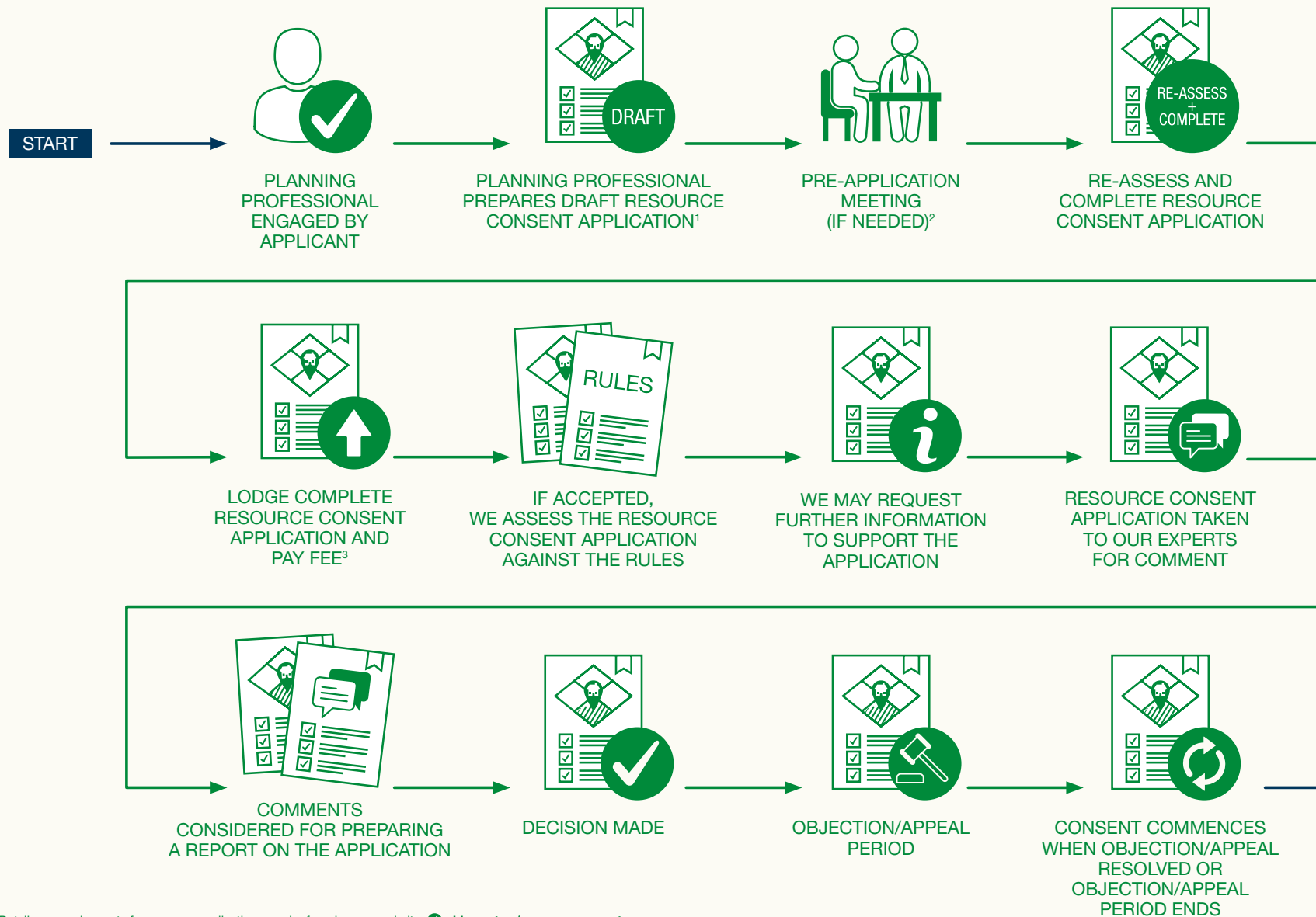


The subdivision process

Resource consent



¹ Details on requirements for resource applications can be found on our website: qldc.govt.nz/resource-consents

² For more details on pre-application meetings visit our website: qldc.govt.nz/pre-application-meeting

³ Via [Community Portal](#)

The subdivision process

Engineering acceptance



DEVELOPMENT
CONTRIBUTION
TRIGGERED

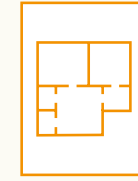
A development contribution is a financial charge levied on new developments to ensure that any party who creates additional demand on local infrastructure contributes to the extra costs they impose on the community in accordance with **QLDC's development contribution policy**. This must be paid before a s224c can be issued.

DID YOU KNOW?

You can request a development contribution invoice at any time after the decision and before subdivision finalisation.



SUITABLY QUALIFIED AND
EXPERIENCED PERSON (SQEP)⁴
ENGAGED TO COMPLETE ENGINEERING
DETAILED DESIGN AND TITLE
PLAN WITH EASEMENTS



SQEP PREPARES
DETAILED
ENGINEERING
DESIGN
in accordance with
councils **CoP**



PRE-ENGINEERING
ACCEPTANCE (EA)
APPLICATION MEETING
(IF RECOMMENDED)



LODGE COMPLETE EA
APPLICATION AND
PAY INITIAL EA FEE



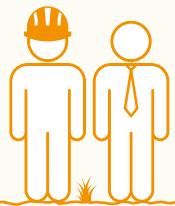
COUNCIL ENGINEERS ASSESS
APPLICATION AGAINST
CONSENT CONDITIONS
AND SUBDIVISION COP



WE MAY REQUEST
FURTHER INFORMATION
TO SUPPORT THE
APPLICATION



ENGINEERING
ACCEPTANCE ISSUED



PRE-START SITE
MEETING WITH
SUBDIVISION INSPECTOR



INFRASTRUCTURE
WORK CAN COMMENCE
ON SITE IN ACCORDANCE
WITH THE COP



SQEP AND COUNCIL
ENGINEERS MONITOR
CONSTRUCTION
AGAINST ENGINEERING
ACCEPTANCE AND COP



SQEP NOTIFIES COUNCIL
ENGINEERS OF ANY
DEPARTURES FROM EA
A variation to the EA or the resource
consent can be requested



INFRASTRUCTURE
WORK
COMPLETED

CONTINUED
OVER PAGE

⁴ See **Code of Practic (CoP)** for description of SQEP

The subdivision process

Finalisation

