

# LET'S TALK KŌRERO MAI

THE QUEENSTOWN LAKES DISTRICT COUNCIL NEWSLETTER // JUNE / JULY 2024 // ISSUE 161

THE QLDC NEWSLETTER  
FORMERLY KNOWN AS SCUTTLEBUTT!

## Written in the stars

Wow! We were treated to an amazing light show in May as the Aurora Australis set the night sky ablaze with colour. A different celestial celebration takes place at the end of June with a public holiday and special events in Arrowtown and Wānaka to mark Matariki.

[FIND OUT MORE ON PAGE 14](#)

### INSIDE

03

HELP WITH  
HOUSING

04

LONG TERM  
PLAN LATEST

09

ANNUAL POOL  
SHUTDOWNS

11

LOCALS  
HONOURED



Tell us if you want to save paper and read Let's Talk Kōrero Mai online. See page 15 for details.



Let's Talk Kōrero Mai is printed on paper sourced from sustainably managed forests.



Let's Talk Kōrero Mai is recyclable. Please recycle me.

# Your council

Ever wondered how to contact your elected representatives for a chat about what's happening in your community? We've listed your councillors and the areas they represent here.



## WĀNAKA-UPPER CLUTHA COMMUNITY BOARD

-  Simon Telfer (Chairperson)  
Simon.Telfer@qldc.govt.nz
-  Chris Hadfield  
Chris.Hadfield@qldc.govt.nz
-  Linda Joll  
Linda.Joll@qldc.govt.nz
-  John Wellington  
John.Wellington@qldc.govt.nz

- Councillor Bruce
- Councillor Cocks
- Councillor Tucker



## QUEENSTOWN LAKES DISTRICT MAYOR GLYN LEWERS

Glyn.Lewers@qldc.govt.nz

## ARROWTOWN-KAWARAU WARD

*Arrowtown, Gibbston, Shotover Country, Lake Hayes Estate, Dalefield and Arthurs Point.*



Councillor Craig 'Ferg' Ferguson  
Craig.Ferguson@qldc.govt.nz



Councillor Lisa Guy  
Lisa.Guy@qldc.govt.nz



Councillor Melissa White  
Melissa.White@qldc.govt.nz

## QUEENSTOWN-WHAKATIPU WARD

*Jacks Point, Hanley's Farm, Kingston, Frankton, Quail Rise, Kelvin Peninsula, Glenorchy, central Queenstown and Fernhill.*



Councillor Gavin Bartlett  
Gavin.Bartlett@qldc.govt.nz



Councillor Niki Gladding  
Niki.Gladding@qldc.govt.nz



Councillor Esther Whitehead  
Esther.Whitehead@qldc.govt.nz



Councillor Matt Wong  
Matt.Wong@qldc.govt.nz

## WĀNAKA-UPPER CLUTHA WARD

*From the top of the Crown Range and all of the Upper Clutha area including Hāwea up to just beyond Makarora and including part of the Matukituki Valley in Mt Aspiring National Park.*



Deputy Mayor Quentin Smith  
Quentin.Smith@qldc.govt.nz



Councillor Barry Bruce  
Barry.Bruce@qldc.govt.nz



Councillor Lyal Cocks  
Lyal.Cocks@qldc.govt.nz



Councillor Cody Tucker  
Cody.Tucker@qldc.govt.nz

# Manaaki – help with housing

Manaaki is a te ao Māori concept that encompasses hospitality, kindness and respect for others. It involves caring for, supporting and uplifting those around you, creating a sense of community and wellbeing.

As more people migrate here to enjoy the magic of our district, there is more demand for our already-stretched accommodation.



**Manaaki**  
A PLACE TO CALL HOME

## THINKING ABOUT OFFERING A ROOM?

The Manaaki info hub provides useful information about the benefits of offering a room, important things to consider, and where to list your room for rent.

## LOOKING FOR A PLACE TO LIVE?

You'll find some fantastic advice on the hub, including how to look for accommodation, places to get free advice and support, as well as resources such as where to access discounted showers, free Wi-Fi and phone charging. It also covers resources to support you in understanding your rights as a tenant in Aotearoa New Zealand.

## ARE YOU AN EMPLOYER LOOKING TO HELP YOUR STAFF FIND ACCOMMODATION?

Browse the Manaaki info hub for tips to support your staff with their accommodation needs, including ways to make new recruits feel welcome when they move to town. You'll also find the Business Toolkit, which is a fantastic resource developed by Queenstown Business Chamber of Commerce.

The current housing challenges we face are well-documented and we're working with a range of partners to address them. Together, there are lots of ways we can help ease the pressure and help people to find a home.

Our Manaaki online information hub is all about providing support, care and hospitality to those who need it most.

It's packed with useful local information and resources for anyone who is new to town or needs help finding a place to live in our district on a short- or long-term basis. There's also information for local homeowners who might be able to help by offering a room, or employers keen to support their staff.

[qldc.govt.nz/community/manaaki](https://qldc.govt.nz/community/manaaki)

## Some are less adept at navigating the fast track



**vivian+espie**

resource management and landscape planning

(03) 441 4189 [www.vivianespie.co.nz](http://www.vivianespie.co.nz)

# Consultation on Long Term Plan 2024-2034 coming soon

A draft Long Term Plan (LTP) for 2024-2034 is being prepared and will be presented to Full Council on 27 June.

If approved for consultation, submissions will open soon after the meeting.

This plan affects everyone so keep your eyes peeled for more information coming soon and please have your say.

The LTP covers Council's workplan for the next ten years, with a more detailed focus on the first three years. It sets out how we propose to pay for it and what it means for the rates you pay.

Like other businesses, and councils across NZ (and the world), everything we do costs more. Things

like inflation, high interest rates and insurance fees, increased civil construction costs, government compliance costs, the reintroduction of Three Waters and uncertainty around alternative funding tools, have all meant this has been one of the most difficult budgets to prepare on behalf of the community.

The draft plan focuses on getting the basics right first. That means a solid foundation of infrastructure, community facilities, and consistent levels of service are essential. Given the significant financial constraints, it will simply not be possible to deliver many of the things the community and Council had hoped.

Ahead of consultation starting, we've provided an online 'ask a question' tool. If you have a question about the process, ask it at [letstalk.qldc.govt.nz/long-term-plan-2024-2034](https://letstalk.qldc.govt.nz/long-term-plan-2024-2034) and we'll get an answer published for everyone to read as soon as possible.

# Attention all paw-rents!

It's that time of the year again: remember to renew your annual dog rego, or register a new pooch.

Dog registration invoices should have landed in your inbox at the beginning of June, and you've got until 31 July to pay. All dogs over the age of three months must be registered.

Not only is keeping your furry friend registered crucial for their safety and wellbeing, fees also contribute towards our work including three full-time animal control officers, two dog pounds to secure roaming dogs, dog training sessions and our annual community dog walks in Wānaka and Queenstown, education in schools and dog poo dispensers at Council reserves.

We've made it easier than ever by offering online payments. Just head to [qldc.govt.nz/do-it-online/make-a-payment/](https://qldc.govt.nz/do-it-online/make-a-payment/) and get it done in a few clicks.

Has your pooch moved to a new house? Don't forget to update their details. Keeping their address current ensures that if your dog ever goes on an unexpected adventure, we can help bring them back home safely. You can update their details here [qldc.govt.nz/update-dog-details](https://qldc.govt.nz/update-dog-details) or by emailing [services@qldc.govt.nz](mailto:services@qldc.govt.nz)

And while you're online, why not sign up for *Scuttlemutt* – our twice-yearly email newsletter features the latest information on everything from upcoming registration periods to cool dog-related events, great local walks for you and your pooch, training tips and a whole lot more!

Subscribe now for free at [📧 qldc.govt.nz/scuttlemutt](https://qldc.govt.nz/scuttlemutt)



## Property Stars Shine!

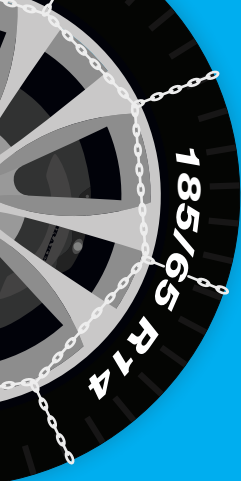


**HOUSEMART**  
HOW SMART

**LPMA 2023 AWARD WINNERS:**

- ★ Excellence in Customer Service ★
- ★ Excellence in Business Development ★
- ★ Newcomer Property Manager of the Year ★

Talk to our award-winning team for honest, expert advice and a free market appraisal.  
**03 442 3815 / [housemart.co.nz](https://housemart.co.nz)**



# KNOW BEFORE YOU GO



Know how to read your tyre and get the right chains for your car. Your tyre size will be printed on the side. Use the **Snowsweat online calculator** to find the right size chains for your vehicle.

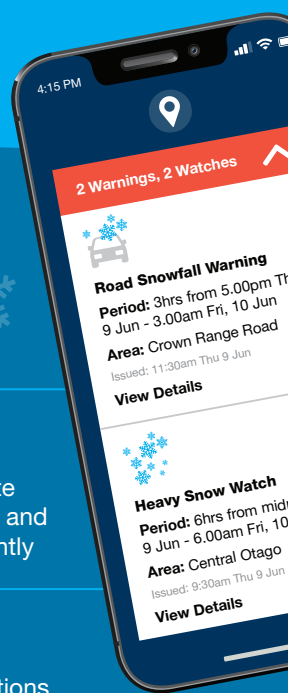
Grab a free **ice scraper** from QLDC offices, libraries and rec centres. Don't use hot water to clear your windscreen!

## THIS WINTER

Whether you're an ace behind the wheel or haven't had much experience driving in ice and snow, there's plenty you can do to keep yourself and others as safe as possible when you're out on the roads this winter.

### Here are some top tips:

- |  |  |  |   |
|--|--|--|---|
| <p><b>1</b></p> <p>Double your following distance and don't overtake grit trucks</p>   | <p><b>2</b></p> <p>Plan extra travel time and slow down</p>  | <p><b>3</b></p> <p>Take extra care on bridge surfaces and when driving through shaded areas</p>  | <p><b>4</b></p> <p>Accelerate smoothly and brake gently</p> |
| <p><b>5</b></p> <p>Carry chains in your vehicle wherever you go, and know how and when to fit them. If you use Crown Range Road regularly, chains should be carried at all times</p> | <p><b>6</b></p> <p>If it's one of those really cold, snowy or icy days, sometimes it's just better to stay home and only travel if it's absolutely necessary</p> | <p><b>7</b></p> <p>Check road conditions before you leave the house, and make sure all vehicle windows are free of snow and ice before driving</p> |   |



Sign up to our Winter Road Reports at [qldc.govt.nz/winter-road-reports](http://qldc.govt.nz/winter-road-reports) and you'll get an email every morning before 7.00am with a heads up on what to expect.

Sign up to our community text alerts at [qldc.govt.nz/text-alerts](http://qldc.govt.nz/text-alerts) and we'll send you a txt message about any road closures due to snow or black ice warnings.

# IS YOUR VEHICLE READY FOR WINTER?

What would you do if you were stuck on the road for several hours, or even overnight, because of an accident, flooding, heavy snow or rockfalls? In winter we should all carry chains and an ice-scraper but it's strongly recommended every vehicle should also have:



A first aid kit



Bottle of water



A car charger for your cellphone (or separate power pack)



Snacks



A shovel (which can save the day in certain situations)



Warm clothes and a blanket for you and your passengers – these situations can sometimes last several hours and you'll need to stay warm

Remember, if you're stuck in an isolated area it's safest to remain in your vehicle until help arrives, unless you're at risk of being trapped, for example, in floodwater (when you should safely move to higher ground and call for help).



## Are you ready?

Sign up to Otago Gets Ready for free emergency alerts:

 [otago.getsready.net](https://otago.getsready.net)



# More milestones for arterial road

We've reached another significant milestone on the Queenstown arterial road with the opening of Melbourne Street to traffic. With asphalt down on the road, the Kā Huanui a Tāhuna (Alliance) team has been able to reduce its worksite footprint significantly – allowing cars to use Melbourne Street and exit with a left-turn onto Frankton Road.

Construction is still underway within the reduced site with preparations for the footpaths and garden beds progressing well. While line marking has temporarily been laid on Melbourne Street, crews will return during the warmer months to lay the final road surface and apply permanent line marking.

*A bird's eye view of the asphalt being laid on Melbourne Street.*



## Retaining walls shaping up

Crews are managing complex retaining wall installations at several different places along the arterial route. The photo below shows the propping that is supporting the huge pre-cast decorative panels along Henry Street, the heaviest of which weighs in at 5.3 tonnes.

*A total of 58 large decorative panels are being installed along Henry Street.*

## Stay up to date

Scan to sign up for a monthly update on the Town Centre Arterial and Frankton Intersection and Bus Hub Improvement project.





# POOLS TREATED TO A DEEP CLEAN

We're swapping swim togs and goggles for gumboots and overalls at Alpine Aqualand and Wānaka Recreation Centre (WRC) when the aquatic facilities undergo a deep clean and preventative maintenance.

## ALPINE AQUALAND (TWO WEEKS)

Pools will be closed temporarily from 2.00pm Saturday 29 June to Sunday 14 July inclusive. The swim school term has been shortened by one week to accommodate the closure.

## WĀNAKA RECREATION CENTRE (ONE WEEK)

Pools will be closed temporarily from Sunday 21 to Sunday 28 July inclusive. The swim school term has been shortened by one week to accommodate the closure.

Pool memberships at both facilities will be suspended for the shutdown periods so members aren't out of pocket.

Specific tasks include cleaning and inspecting pool liners and connections, cleaning all filters, a deep clean of the pool hall floor and hard-to-reach areas, servicing plant room equipment, flushing water treatment lines, and conducting condition assessments of filter material and mechanical pumps.

The indoor courts and other facilities at QEC and WRC remain open as normal.

Does this photo look a bit dark? That's the idea!



## SENSORY SESSIONS AT THE POOLS

Swimming pools can be difficult places for those with sensory sensitivity issues. They're often loud, bright, humid and have a strong smell of chlorine.

That's why we've introduced sensory sessions to create an inviting space at both Alpine Aqualand (Queenstown Events Centre) and Wānaka Pool.

Every Friday from 2.15-3.15pm we'll be lowering the volume of our music, dimming the lights and turning off the water features.

We also have a sensory box available at all times from our customer service staff. It includes extra tools and toys to help those with sensory issues. Just speak to one of our team if you'd like to find out more or use one during your visit.

If you're a carer, you can also book a tour with our pool crew to check out our facilities before you bring someone in. This can be really helpful to explain the sensory story and anticipate what might happen during your visit.

For more info head to  
[qldc.govt.nz/sensory-sessions](https://www.qldc.govt.nz/sensory-sessions)

# From the Chambers

---

## CHANGE IN OWNERSHIP PROPOSED FOR COUNCIL UNITS

QLDC has long had a very productive and positive relationship with the Queenstown Lakes Community Housing Trust (QLCHT) and a new initiative is set to take this one step further.

At its meeting on 2 May, Council approved a Statement of Proposal beginning consultation on removing the Council's housing units for the elderly from the schedule of QLDC assets and transferring them to QLCHT, all for the princely sum of \$1.00.

Subject to the outcome of the consultation process, this would be a major step for seniors in the community and could help provide access to affordable housing in the district. There are five units in Wānaka and four in Arrowtown. QLCHT already has an existing senior housing programme to which these dwellings are proposed to be added.

Consultation on this proposal begins 28 June and closes 28 July.

## PROPOSED WASTE FEES AND CHARGES

The Council agreed new waste fees and charges at its meeting held on 6 June.

The waste 'industry' has become increasingly complex in recent years, for example with QLDC having to participate in the Emissions Trading Scheme (EMS). These costs are one of the drivers for the need to review waste fees and charges each year.

Another consideration is the Unique Emissions Factor (UEF) and QLDC has worked with its operator of the Victoria Flats landfill to apply for a UEF based on the destruction efficiency of the landfill gas management system. The more efficient the gas destruction, the lower the UEF. A low UEF is one factor that reduces the overall cost of EMS obligations.

Another impact on the cost is a new scheme called the 'Tyre product stewardship scheme' that was introduced earlier this year requiring those making, selling and using tyres to take (financial) responsibility for preventing end-of-life tyres ending up in landfills or the environment. From 1 September, this scheme will include collection sites such as refuse transfer stations so there may yet have to be a further adjustment later this year to the fee for accepting tyres.

## FROM TABLES AND CHAIRS TO 'OUTDOOR DINING'

Sitting in the fresh air enjoying a meal and a drink is something that most people find pretty enjoyable. Many restaurants and eateries in the district have taken advantage of the stable weather and scenic outlook to effectively 'extend' their businesses by siting tables and chairs outside.

The Council has recently updated its old 'tables and chairs' policy that has been in place for nearly 20 years to reflect more modern and business-like practices and has also renamed the policy 'Outdoor Dining on Public Space Policy 2024'. The policy deals with many similar matters as previously such as the uniform and robust design of tables and chairs, storage, use of outdoor heaters and umbrellas.

The aim of the policy also remains true to original objectives – to provide an attractive street frontage that is also vibrant, dynamic and comfortable, whilst at the same time ensuring pedestrian flow is maintained.

We've set up a new web page which includes lots of important information about the requirements of the policy, and steps to take if you wish to apply for a new licence or amend/renew an existing one: [qldc.govt.nz/apply-for-an-outdoor-dining-licence](https://qldc.govt.nz/apply-for-an-outdoor-dining-licence)

---

Did you know you can tune in live to our full Council meetings or watch them later?



[qldc.govt.nz/your-council/council-documents/agendas-minutes](https://qldc.govt.nz/your-council/council-documents/agendas-minutes)



@qldcinfo

# Locals honoured



JIM BOULT



MARY LEE

Image credit - Wānaka App



RALPH FEGAN

Image credit - Wānaka App

Mayor Lewers has congratulated three local stalwarts after they received King’s Birthday Honours in June.

Former Mayor Jim Boulton and Wānaka’s Mary Lee were both appointed a Companion of the New Zealand Order of Merit (CNZM): Jim for services to local government, tourism and the community, and Mary for services to snow sports and tourism. Ralph Fegan, also of Wānaka, was appointed an Officer of the New Zealand Order of Merit (ONZM) for services to Fire and Emergency New Zealand and the community.

Mayor Lewers acknowledged his immediate predecessor who served our community as Mayor for two terms.

“Throughout those six years he was a tireless advocate for the district, especially when steering us all – notably our migrant community – through the pandemic with authority, empathy and unwavering energy.”

“Whilst that unexpected crisis management may well be his biggest achievement in this role, we should also remember his foresight in setting up the Mayoral Housing Affordability Taskforce in 2017.”

“He lobbied central government for a visitor levy to address the specific challenges of infrastructure investment in our district. It’s testament to his vision that 81% of nearly 10,000 voters in 2019’s local referendum supported the concept which would most likely have occurred but for the effects of the pandemic.”

“Jim’s ongoing commitment to so many great causes and charities, and to our local community, is a reflection of his passion and dedication to making this a great place to live.”

On behalf of the whole district, Mayor Lewers added how grateful he was to have Mary and Ralph as locals.

“It’s fair to say that without Mary and her husband John we would not have the world-renowned local snow sports industry we have today. Full of the pioneering spirit that made the Cardrona Valley famous, they opened not only what is now Cardrona Alpine Resort, but also Snow Farm cross country ski field and Snow Park.”

“To have the vision to form the Pisa Alpine Charitable Trust in 2008 is a testament to Mary’s commitment to the local community. Her skill and tenacity at developing young athletes mean that her legacy will continue to be recognised.”

“Ralph has volunteered for the fire service for nearly 40 years, including Wānaka where he has been secretary since 2013. His tourism career has included spells as Chairman of Lake Wānaka Tourism and as a Director of the South Island Promotion Association. Add in a long list of volunteering with groups like Upper Clutha RSA, Wānaka A&P Show and Food for Love and you get a picture of a local good sort of the highest order.”

**HOLIDAY HOME MANAGEMENT**  
*Sorted.*

We offer all-round service from marketing, guest interaction, cleaning to property maintenance, giving our clients a complete handsfree, stress free experience. Contact us for a free assessment of your property’s rental potential.

Ask us about our latest referral program.

**LUXE STAY**  
Queenstown • New Zealand

+64 21 126 3900 | hello@luxestay.co.nz | www.luxestay.co.nz

# 'Postcards' from recent events

We thought it would be good to round-up some recent events around the district with a few photos to tell the story.



## TECH TIPS FOR TOURISM & HOSPO

The inaugural Host-Tech expo held in May brought together top tech brains and our local network of tourism and hospitality businesses. Organised by QLDC in collaboration with our regional tourism organisations, Hospitality NZ and NZ Tech, the event was a great opportunity to build connections within this technology niche. Pictured (L to R): Katrina Barry – Webjet board member; John Wikstrom – Executive Director, Magic Memories; Philip Fierlinger – Co-founder, Upstock; Jenni Powell – GM Both Brains; and Brad Rowe – Host-Tech organiser.  
*(Image credit – Jonny James Photography)*



## A BOON FOR BOOKWORMS

The Queenstown Lakes Festival of Authors 2024 (April-May) was an unputdownable, page-turning, best-selling celebration of local readers and writers. Organised by QLDC Libraries, the events programme featured a series of inspiring talks and creative workshops across the district. The line-up of authors included US-born Jessica Howland Kany, pictured here sharing her debut novel *A Runner's Guide to Rakiura* to an audience at Wānaka Library. Huge thanks to everyone involved in this year's festival for their participation and support.



## OUR CLUED-UP KIDS

Nearly 200 Year 6 students from all four primary schools in the Upper Clutha were given vital survival and safety skills in this year's Clued-Up Kids programme. Held at Wānaka Recreation Centre over two days, the kids visited different stations staffed by representatives of groups including Civil Defence, FENZ, Police, NZ Red Cross, Hato Hone St John, Coastguard and QLDC Animal Control. Similar sessions were also held for Whakatipu schools. Thanks to everyone who took part!

## BLACK ICE IS AWESOME!

New Zealand's national ice hockey team – the Ice Blacks – recently returned with hard-won silver medals from the 2024 IIHF Division 2 Group B tourney in Bulgaria. The playing squad featured an impressive number of locals (including two Council staff members!) plus the coach and co-manager of reigning national champions, SkyCity Stampede. What a great achievement that bodes well for our own winter season. Head to the local rink in Queenstown Gardens to catch a game yourself or visit:

[skycitystampede.com](https://www.skycitystampede.com)



## LITTLE HANDS MAKE LIGHT WORK

Shotover Primary School joined Bridesdale Bush Trust in May for another planting session. Six different classes plus teachers, volunteers and Council staff meant around 200 pairs of hands got busy digging, planting, mulching and discovering worms! The school and the trust began twice-yearly visits this time last year resulting in nearly 1,000 plants and trees taking root so far. Feedback suggests the kids got a big sense of satisfaction from learning new skills and getting their hands dirty. The project is supported by QLDC, ORC, Whakatipu Reforestation Trust, the local community association and several local businesses. Anyone wanting to know more about the project can follow the Bridesdale Bush Trust on Facebook.



# Celebrating Matariki


This year's public holiday to celebrate Matariki – Māori New Year – is on Friday 28 June. Family events return to both the Lake Wānaka foreshore and Arrowtown under a new name, Matariki Arrowtown Kā-Muriwai.

## WĀNAKA


**When:** Friday 28 June  
2.00-6.00pm

**Where:** Dinosaur Park

Kahu Youth Trust brings you a great family event that's sure to warm a cold winter's night! Spectators will be able to enjoy kapa haka, storytelling, fire and light displays, and the delicious hangi (don't forget a koha donation).

 [kahuyouth.org/](http://kahuyouth.org/)  
[kahu-youth-events/](http://kahu-youth-events/)

 [@kahuyouthtrust](https://www.facebook.com/kahuyouthtrust)

 [@kahu\\_youth\\_trust](https://www.instagram.com/kahu_youth_trust)


## ARROWTOWN

**When:** Friday 28 June 3.30-8.30pm

**Where:** Buckingham Street, Buckingham Green & Library Green

With festivities and kai spread along Buckingham Street, and educational experiences in the Athenaeum Hall and Lakes District Museum, Matariki Arrowtown Kā-Muriwai is set to 'Bring Whānau Together'.

Buckingham Green will feature kapa haka and waiata by local tamariki, and Library Green will showcase performers and poetry. Woven throughout the event line-up are opportunities to learn more about Māori culture and Matariki like flax weaving and storytelling light projections.

 [arrowtown.com/matariki](http://arrowtown.com/matariki)

 [@MatarikiArrowtownKamuriwai](https://www.facebook.com/MatarikiArrowtownKamuriwai)

 [@MatarikiArrowtownKamuriwai](https://www.instagram.com/MatarikiArrowtownKamuriwai)

## WHAT IS MATARIKI?

Matariki is an abbreviation of 'Ngā Mata o te Ariki Tāwhirimātea' ('The Eyes of the God Tāwhirimātea') and refers to a large cluster of stars, also known as the Pleiades. The predawn rising of Matariki in the mid-winter sky marks the changing of the seasons and the beginning of the Māori New Year. It is a time for:

**Remembrance** – Honouring those we have lost since the last rising of Matariki

**Celebrating the present** – Gathering together to give thanks for what we have

**Looking to the future** – Looking forward to the promise of a new year

# New online meeting calendar coming soon

It's about to get a whole lot easier to access information about Council and committee meetings on our website.

We've developed a fully interactive meeting calendar and filtering system so you can easily find out what meetings are happening, when and what's being discussed. All just one click directly from the home page. Next up, we'll be looking at ways to make it easier to find information about all the projects happening across the district.



## Get me via email



This newsletter is mailed to our local residents and out-of-town, NZ-based ratepayers six times a year. If this means you, and you still want to receive a hard copy, then sweet as – you don't need to do anything.

But if you'd like to join the thousands of people who prefer to receive a digital copy via email then it's easy to switch. Just email [services@qldc.govt.nz](mailto:services@qldc.govt.nz) with the word "newsletter" as the subject and be sure to include your name, postal address and the address of your property in the district so we can cross you off the mailing list.

We'll send you a website link six times a year to view/download all future issues instead (and won't spam you with anything else!). You'll be helping us reduce the number of copies we print and distribute.

And remember, every issue is also on our website [qldc.govt.nz/lets-talk-korero-mai](https://qldc.govt.nz/lets-talk-korero-mai)





# Nau Mai Haere Mai, Imogen!

---

## Introducing our new Rangatahi Māori representative

### TELL US A LITTLE BIT ABOUT YOURSELF.

I grew up in Ōtautahi and only moved to Wānaka in November last year. However, I whakapapa to Ōtākou which is located in Ōtepoti at the end of the peninsula. I studied at Te Wānanga o Waitaha (University of Canterbury) for four years and graduated in April with a Bachelor of Social Work with Honours. From a young age I had a drive and passion to make a difference in people's lives and feel incredibly proud of myself for completing my degree. My motivation for social work stemmed from struggles I endured as a rangatahi so, after doing some tough mahi, I knew it was my time to use my journey as a way to empower rangatahi to create positive change and live their best lives.

My current mahi is at Kāhu Youth Trust where I work as a Youth Development Worker. I deliver one-to-one mentoring with youth to provide extra support they may need, empower them to find their strengths and use these as a way to enhance their hauora and achieve their aspirations. I also run an after-school club called 'Hustle' on Wednesdays and am generally around during our after-school drop-in sessions with my amazing colleagues at our new youth centre at Paetara Aspiring Central. Haere mai to all rangatahi in Wānaka looking to hang out in a cool space!

### WHAT MADE YOU APPLY FOR TUIA?

In my first week of mahi I met Darren Rewi, a very respected Ngāi Tahu kaumatua based in Queenstown. Darren mentioned the Tuia kaupapa and encouraged me to apply. I was incredibly nervous about this as I have often not considered myself as a leader or representative of my community. But I was intrigued, wanted to push myself out of my comfort zone, and knew that if I didn't take this opportunity I would regret it.

### WHAT HAVE THE FIRST FEW MONTHS INVOLVED?

I've taken part in two wānanga so far. Tuia i runga was based in Otorohanga in the Waikato region and translates to



‘weaving above’. It was based around our tupuna, whakawhanaungatanga, reflective kōrero and inspiring speakers. The second wānanga was Tuia i raro (‘weaving below’) in Rotorua. This was based around connecting with the whenua. Afterwards I felt empowered, inspired and much more confident in the Kaupapa, and can’t wait until Tuia i roto (‘weaving within’) in July.

I’ve met with Mayor Glyn Lewers a couple of times and have also connected with QLDC Māori Strategy and Partnerships Manager Arne Burgess.

### WHICH PARTS ARE YOU CURRENTLY ENJOYING AND/OR LOOKING FORWARD TO THE MOST?

Mostly I’m enjoying connecting to other like-minded rangatahi all over the motu, and hearing about the mahi they’re doing in their communities. They’re an awesome bunch of people and I feel fortunate to be on the waka with them. I’m also loving being surrounded and enriched in Te Ao Māori as this is not something I’ve had before. I’m learning about tikanga, engaging in meaningful reflective kōrero and learning all kinds of new mātauranga to put in my kete.

I’m really looking forward to the next wānanga Tuia i roto as I feel this will be a really spiritual and emotional weekend for all of us. We’re encouraged to share something about our journey in life. I have an idea of what I’d like to talk about so I’m currently brainstorming how I’d like to deliver this.

### WHAT SKILLS AND EXPERIENCE DO YOU HOPE TO GAIN/DEVELOP BY THE END OF THE PROGRAMME?

I’m really hoping I come away from this kaupapa with more confidence in myself and my abilities, growth in my identity and a strong sense of self. I hope to be enriched with mātauranga that I can bring to my mahi and community.

### WHAT ARE SOME GOALS YOU HAVE FOR THE FUTURE?

A main goal is to become a registered social worker in the next year or so to begin my career. I’m super-passionate about working with rangatahi, focusing on their strengths and finding their passions in life. I would love to complete a Te Reo course and be able to have kōrero and conversations confidently with other speakers. And I’d love to do some travelling and see other parts of the world one day!



Fun and games at the first wānanga in Otorohanga.

## Rent Your Home With Confidence



Your investment is our priority. Get in touch today.



### Rentals Made Easy

Great returns ■ Smart solutions ■ Sound advice

+64 (0)3 409 0480

purepropertyrentals.co.nz

# Investing in community facilities

Our Parks team has been busy with a number of projects that improve the experience for anyone visiting some of our district's reserves and recreation spaces.

Thanks to all residents for your patience and co-operation while we completed these projects.



## NORTHLAKE RESERVE, WĀNAKA

New toilet facilities have been installed to support locals' and visitors' enjoyment of the playground, courts and reserve recreation areas.

## SHOTOVER SPORTS FIELD, QUEENSTOWN

Construction has just wrapped up on a new toilet facility off Headley Drive. This was installed to help support sporting and recreational groups using these fields, which now include new cricket wickets.

## MARINE PARADE, QUEENSTOWN

Upgrades to these toilet facilities are currently underway. The existing units are being replaced having reached the end of their useful life. In the meantime, visitors will have access to the recently installed toilet in front of the Bathhouse restaurant.

## HOPKINS STREET PLAYGROUND, LUGGATE

Construction of new playground equipment for local youngsters and their families was completed in May, and we were delighted to be part of the official opening. Thanks to the Luggate Community Association for hosting the event and firing up the BBQ, and to Plot Landscape and Green by Nature for helping make the playground a reality.



*Northlake toilets*

# Sharing a plan to enhance community connection

Over many decades, migrants from different parts of the world, as well as from all over Aotearoa New Zealand, have made our district their home, making our communities diverse and vibrant.

In recent years, local population growth has changed the makeup of our communities. More newcomers – including migrants from across the world, international students and Kiwis relocating to the district –

are choosing this place to live, study, work or play, either just for a while or permanently.

The Welcoming Communities | Te Waharoa ki ngā Hapori programme, initiated by Immigration New Zealand and now led by councils across the country, works towards healthier, happier and more productive communities by welcoming newcomers into the local community.

Moving to a new place is exciting but can also be a challenging time. To support people who choose to settle in our district we've been working with volunteer advisory groups, made up of community members, to help guide and develop a Welcoming Plan. The goal of this plan is to make everyone feel welcome in their new home and be able to participate in the economic, civic, cultural and social life of their new community.

The plan identifies key actions that the programme will work towards achieving over the next three years. We encourage the community to take ownership of this plan and bring it to life with the support of local businesses, organisations and Council.

We'll be sharing the Welcoming Plan 2024-2027 with the community this August. In the meantime, you can find out more about Welcoming Communities at [qldc.govt.nz/welcoming-communities](https://qldc.govt.nz/welcoming-communities)



*A flock of new Kiwis celebrating their New Zealand citizenship earlier this year.*

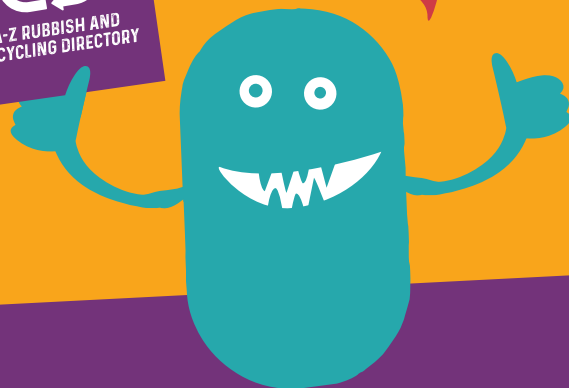


# HEY, HOT STUFF!

Winter and fireplaces are a match made in heaven. If you're keeping the fires burning, don't let things go up in smoke when disposing of your ashes!



CHECK OUT OUR  
A-Z RUBBISH  
AND RECYCLING  
DIRECTORY



Remember that ashes stay hot long after a fire has gone out and can start fires in household rubbish bins, collection trucks, transfer stations and landfill.

Safely dispose of ashes by emptying them into a metal bin, pouring water over them and leaving for five days to cool.

Completely cold ashes which have been doused in water and left for five days can be placed in your red rubbish bin.

It's important that only cold ashes go in the red rubbish bin, as even warm ashes can melt it.

Check out our A-Z Rubbish & Recycling Directory to find out where other unwanted items can be dropped off for reuse, recycling or safe disposal:

[qldc.govt.nz/services/rubbish-recycling/](http://qldc.govt.nz/services/rubbish-recycling/)

## TAKE CHARGE OF SAFE BATTERY DISPOSAL

Batteries are responsible for powering many of our modern-day devices and tools but did you know they pose a significant fire risk if improperly disposed of?

In line with their increasing use, Fire and Emergency NZ is reporting a significant rise in battery fire incidents in Aotearoa New Zealand (also seen around the world). Batteries are the leading cause of fires in collection trucks and landfills so it's important to keep them out of your kerbside bins.

At the end of their life, never dispose of batteries in any kerbside or public place rubbish or recycling bin.

These batteries, and others, can be recycled for free through Council facilities. This includes common household batteries, lithium-ion batteries, EV batteries and traditional car batteries.

You can do this via the Queenstown Transfer Station at 110 Glenda Drive, Frankton and Wānaka Transfer Station next to Wastebusters on Ballantyne Road. For opening times visit [qldc.govt.nz/transfer-stations](http://qldc.govt.nz/transfer-stations)

*In May, a fire in one of our collection vehicles meant we had to dump it all on Upton St, Wānaka and call out FENZ volunteers.*



# Reviewing our Waste Plan

We're starting work to review the district's Waste Minimisation and Management Plan (WMMP).

The WMMP is a roadmap to guide Council's work to minimise and manage the waste we all create through our daily lives, whether that's at home, at work or when we're out and about. It will identify short- and longer-term opportunities to ensure we're all protecting our resources and environment.

The current plan was adopted in 2018 and included a wide range of actions. A number of these actions have been completed or are underway, and some others are still relevant and should be considered for rolling over into a future plan.

The review will align with the new vision and legislated requirements included in the new national waste strategy 'Te rautaki para' which was released in March 2023.

To get the ball rolling, we've completed a waste assessment for the district and wider Otago region and consulted with the Medical Officer of Health. Over the coming months, we'll be engaging with a range of local groups and individuals to help us identify what's most important to work on together to reduce waste in the district.

Following this, we expect to release a draft WMMP for wider public consultation in later in 2024.

Keep your eyes peeled for opportunities to get involved!

# Celebrating volunteers

This issue was due to be published during National Volunteer Week (16-22 June) – the annual opportunity to recognise, thank, and celebrate the huge contribution made by volunteers around the country.

This year's theme is 'Whiria te Tangata – Weaving the people together'. To this end, QLDC has again teamed up with Volunteer South and Kiwi Kit Community Trust to host *Find Your Perfect Match* sessions when locals can connect with non-profits that support a good causes:

- > Lake Wānaka Centre – 19 June, 4.30-6.30pm.
- > Queenstown Events Centre – 26 June, 4.30-6.30pm.

For more info visit

 [volunteersouth.org.nz](https://volunteersouth.org.nz)



## Your holiday home specialists

**Looking for exceptional property management? Look no further! Our expert team provides top-notch service, ensuring your holiday home is well-maintained and guest-ready. Trust us to deliver a seamless experience for you and your guests.**

- Management fee 18% - No Hidden Costs
- High Occupancy

**Experience the difference. Contact us today by emailing [info@luxuryaway.co.nz](mailto:info@luxuryaway.co.nz) or call +64 22 362 1588**



# Need a book?

Download an eBook, eMagazine or eAudiobook today!

You can borrow eBooks, eMagazines and eAudiobooks on your device, **free with your library card.**

## Here's how to get started:

- 1** Download our apps, Borrowbox and Libby
- 2** Sign in by selecting Queenstown Lakes District Libraries
- 3** Use your Library card number and pin to login
- 4** Enjoy listening or reading!



## Need help logging in?

If you are having trouble logging in, give your local library a call or pop in – we can help you log in.

*Enriching minds and communities:  
Te whakapuāwai i kā hinengaro me kā hāpori*

**libraries**  
whare pukapuka  
Queenstown Lakes

# Burn dry

Air quality can worsen due to home heating, but can vary hugely by location and time of year.

Otago has several towns where air quality is known to worsen during winter. Arrowtown is one in our district.

Air quality is monitored by measuring the amount of microscopic particles, for example from wood burning. Elevated levels can be harmful to your health. So, only burn dry wood in a well-ventilated fire to reduce pollution.

Otago Regional Council has monitoring stations in Arrowtown, Alexandra, Clyde, Cromwell, Dunedin, Milton and Mosgiel.

Results are available at: [orc.govt.nz/airquality](https://orc.govt.nz/airquality)

## HOW TO BURN DRY AND BREATHE EASY:

Stack firewood off the ground, out of the rain and with plenty of **airflow** so it dries faster.

Use a **moisture meter** to check if your wood is dry enough to burn. Less than 25% moisture means more heat and less smoke.

**Don't** burn wet or green firewood, treated wood or household rubbish – they can release harmful toxins.

Get more tips at [orc.govt.nz/burndry](https://orc.govt.nz/burndry)

# Te Atamira turns two!

Te Atamira, the multi-purpose arts and cultural space located in Frankton, recently celebrated its second anniversary.

That's two years of exhibitions, performances, community programmes and opportunities for people of all ages and backgrounds to come together and celebrate creativity.

The team has been inviting visitors to unleash their talents to show what Te Atamira means to them. Drop by to see dozens of posters and other submissions on display over winter.

Find a full calendar of events at [teatamira.nz/whats-on](https://teatamira.nz/whats-on)



# Let's Talk – we'd love to hear from you



Register and find full details of these projects and more at [letstalk.qldc.govt.nz](http://letstalk.qldc.govt.nz)

## Did you know we have a whole website dedicated to consultation?

Let's Talk is an easy way to contribute to local decision making by having a say on the topics and projects that matter to you and your community. Go to [letstalk.qldc.govt.nz](http://letstalk.qldc.govt.nz). You can even register for a regular update on current consultation topics and what's coming up. We'll also provide a snapshot in every edition of these Let's Talk | Kōrero Mai newsletter.

### WHAT'S COMING UP OVER THE NEXT FEW MONTHS:

<b>LONG TERM PLAN 2024-2034</b> Formal consultation expected to start 28 June	<b>ELDERLY HOUSING ASSET TRANSFER</b> Formal consultation to start 28 June	<b>UPDATES TO DEVELOPMENT CONTRIBUTION POLICY</b> Formal consultation expected to start 28 June	<b>WASTE MANAGEMENT AND MINIMISATION PLAN REVIEW</b> Stakeholder engagement coming soon	<b>WELCOMING PLAN</b> Community engagement to start 1 August	<b>MT IRON RECREATION RESERVE MANAGEMENT PLAN</b> Formal consultation expected September	<b>AND MUCH MORE</b>
--	---	--	--	---	---	----------------------

### FEEDBACK HAS CLOSED AND SUBMISSIONS ARE BEING REVIEWED FOR THE FOLLOWING PROJECTS:

<b>BROTHEL CONTROL BYLAW</b> Formal consultation closed 5 June	<b>CREATIVITY AND CULTURE STRATEGY</b> Updated strategy to be presented to Full Council on 27 June	<b>USER FEES AND CHARGES</b> Hearings panel recommendation to be presented to Full Council on 27 June
---	---	--

## QLDC OFFICES

### Queenstown Office:

10 Gorge Road  
Private Bag 50072, Queenstown  
Phone: 03 441 0499

### Wānaka Office:

47 Ardmore Street, Wānaka  
Phone: 03 443 0024

E-mail: [services@qldc.govt.nz](mailto:services@qldc.govt.nz)

### Office Hours:

Weekdays 8.00am – 5.00pm

## QUEENSTOWN EVENTS CENTRE

Alpine Aqualand  
Alpine Health & Fitness  
Indoor Courts  
Sports fields  
Phone: 03 450 9005

## WĀNAKA RECREATION CENTRE

Wānaka Pool  
Indoor Courts  
Phone: 03 443 9334

## PAETARA ASPIRING CENTRAL

Indoor Courts  
Studio  
Phone: 03 450 1721

## VENUES

For more information on our venues please head to [qldc.govt.nz/venues](http://qldc.govt.nz/venues)

## LIBRARIES

For library opening hours and locations please head to [codc-qldc.govt.nz](http://codc-qldc.govt.nz)

## TRANSFER STATIONS

**Whakatipu:** 110 Glenda Drive  
Frankton Industrial Area  
Phone: 03 348 5126

**Upper Clutha:** Cnr of Ballantyne & Riverbank Roads  
Phone: 03 348 6125

## HARBOURMASTER

Report non-compliance of waterway rules by phone **03 441 0499** or email [services@qldc.govt.nz](mailto:services@qldc.govt.nz)  
In an emergency on the water always call **111**

## EDITORIAL & ADVERTISING CONTACT

Let's Talk Kōrero Mai is published bi-monthly by Queenstown Lakes District Council to inform ratepayers and residents of council activities.

Sam White ✉ [sam.white@qldc.govt.nz](mailto:sam.white@qldc.govt.nz)  
Feedback and ideas are welcome.

LET'S TALK KŌRERO MAI // JUNE/JULY 2024 // ISSUE 161 // [www.qldc.govt.nz](http://www.qldc.govt.nz)